

# Pan Phospho-Tyrosine Mouse Monoclonal Antibody

## CABP0973



---

### Product Information

**Size:**

20uL, 50uL, 100uL, 200uL

**Observed MW:**

Refer to figures

**Calculated MW:****Applications:**

WB IF

**Reactivity:**

Human, Mouse, Rat, Other  
(Wide Range)

### Antibody Information

**Recommended dilutions:**

WB 1:500 - 1:2000 IF 1:50 - 1:200

**Source:**

Mouse

**Isotype:**

IgG

**Purification:**

Affinity purification

### Protein Background

### Immunogen information

**Gene ID:**

Uniprot

**Synonyms:****Immunogen:**

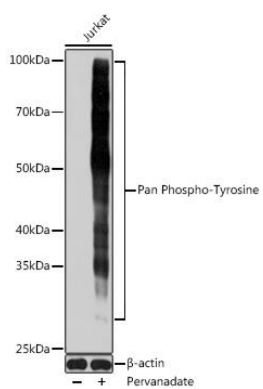
A synthetic peptide corresponding to a sequence containing phosphorylated Y.

**Storage:**

Store at -20°C. Avoid freeze / thaw cycles. Buffer: PBS with 0.02% sodium azide, 50% glycerol, pH7.3.

## Product Images

---



Western blot - Pan Phospho-Tyrosine Mouse mAb (CABP0973)