

# Phospho-IRF3-S386 Rabbit Monoclonal Antibody



CABP0995

## Product Information

### Size:

20uL, 50uL, 100uL

### Observed MW:

55kDa

### Calculated MW:

47kDa

### Applications:

WB

### Reactivity:

Human

## Protein Background

This gene encodes a member of the interferon regulatory transcription factor (IRF) family. The encoded protein is found in an inactive cytoplasmic form that upon serine/threonine phosphorylation forms a complex with CREBBP. This complex translocates to the nucleus and activates the transcription of interferons alpha and beta, as well as other interferon-induced genes. Alternatively spliced transcript variants encoding multiple isoforms have been observed for this gene. [provided by RefSeq, Nov 2011]

## Immunogen information

### Gene ID:

3661

### Uniprot

Q14653

### Synonyms:

IIAE7

## Antibody Information

### Recommended dilutions:

WB 1:500 - 1:2000

### Source:

Rabbit

### Isotype:

IgG

### Purification:

Affinity purification

### Immunogen:

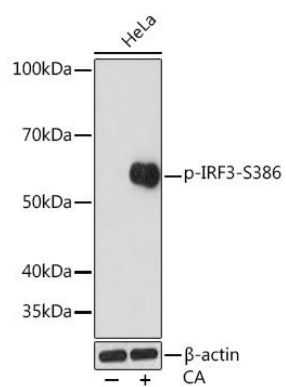
A phospho specific peptide corresponding to residues surrounding S386 of human IRF3

### Storage:

Store at -20°C. Avoid freeze / thaw cycles. Buffer: PBS with 0.02% sodium azide, 0.05% BSA, 50% glycerol, pH7.3.

## Product Images

---



Western blot - Phospho-IRF3-S386 Rabbit mAb (CABP0995)