

Phospho-STAT1-S727 Rabbit Monoclonal Antibody

CABP1000



Product Information

Size:

20uL, 50uL, 100uL

Observed MW:

87kDa

Calculated MW:

87kDa

Applications:

WB IHC

Reactivity:

Human, Mouse, Rat

Antibody Information

Recommended dilutions:

WB 1:500 - 1:2000 IHC 1:50 - 1:200

Source:

Rabbit

Isotype:

IgG

Purification:

Affinity purification

Protein Background

The protein encoded by this gene is a member of the STAT protein family. In response to cytokines and growth factors, STAT family members are phosphorylated by the receptor associated kinases, and then form homo- or heterodimers that translocate to the cell nucleus where they act as transcription activators. This protein can be activated by various ligands including interferon-alpha, interferon-gamma, EGF, PDGF and IL6. This protein mediates the expression of a variety of genes, which is thought to be important for cell viability in response to different cell stimuli and pathogens. Two alternatively spliced transcript variants encoding distinct isoforms have been described. [provided by RefSeq, Jul 2008]

Immunogen information

Gene ID:

6772

Uniprot

P42224

Synonyms:

CANDF7; IMD31A; IMD31B; IMD31C; ISGF-3; STAT91

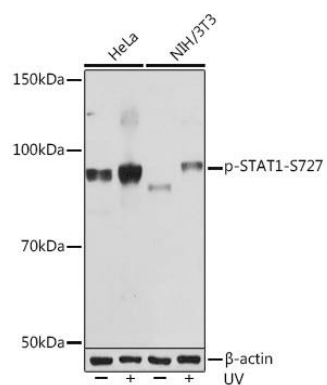
Immunogen:

A phospho specific peptide corresponding to residues surrounding S727 of human STAT1

Storage:

Store at -20°C. Avoid freeze / thaw cycles. Buffer: PBS with 0.02% sodium azide, 0.05% BSA, 50% glycerol, pH7.3.

Product Images



Western blot - Phospho-STAT1-S727 Rabbit mAb (CABP1000)