

# Phospho-Cdk1/2-T14 Rabbit Monoclonal Antibody

## CABP1001



### Product Information

**Size:**

20uL, 50uL, 100uL

**Observed MW:**

34KDa

**Calculated MW:**

34kDa

**Applications:**

WB

**Reactivity:**

Human, Mouse, Rat

### Antibody Information

**Recommended dilutions:**

WB 1:500 - 1:2000

**Source:**

Rabbit

**Isotype:**

IgG

**Purification:**

Affinity purification

### Protein Background

The protein encoded by this gene is a member of the Ser/Thr protein kinase family. This protein is a catalytic subunit of the highly conserved protein kinase complex known as M-phase promoting factor (MPF), which is essential for G1/S and G2/M phase transitions of eukaryotic cell cycle. Mitotic cyclins stably associate with this protein and function as regulatory subunits. The kinase activity of this protein is controlled by cyclin accumulation and destruction through the cell cycle. The phosphorylation and dephosphorylation of this protein also play important regulatory roles in cell cycle control. Alternatively spliced transcript variants encoding different isoforms have been found for this gene. [provided by RefSeq, Mar 2009]

### Immunogen information

**Gene ID:**

983/1017

**Uniprot**

P06493/P24941

**Synonyms:**

CDC2; CDC28A; P34CDC2

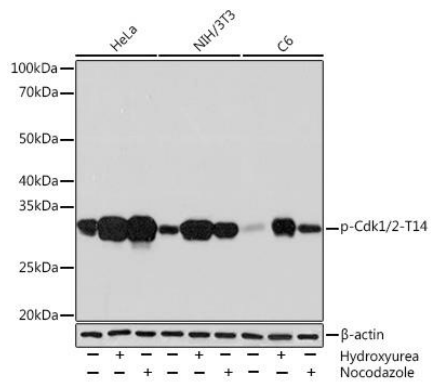
**Immunogen:**

A phospho specific peptide corresponding to residues surrounding T14 of human Cdk1/2

**Storage:**

Store at -20°C. Avoid freeze / thaw cycles. Buffer: PBS with 0.02% sodium azide, 0.05% BSA, 50% glycerol, pH7.3.

## Product Images



Western blot - Phospho-Cdk1/2-T14 Rabbit mAb (CABP1001)