

# Phospho-AMPKAlpha1-S496 Rabbit Monoclonal Antibody

## CABP1002



### Product Information

**Size:**

20uL, 50uL, 100uL

**Observed MW:**

64KDa

**Calculated MW:**

64kDa

**Applications:**

WB

**Reactivity:**

Human, Mouse

### Antibody Information

**Recommended dilutions:**

WB 1:500 - 1:2000

**Source:**

Rabbit

**Isotype:**

IgG

**Purification:**

Affinity purification

### Protein Background

The protein encoded by this gene belongs to the ser/thr protein kinase family. It is the catalytic subunit of the 5'-prime-AMP-activated protein kinase (AMPK). AMPK is a cellular energy sensor conserved in all eukaryotic cells. The kinase activity of AMPK is activated by the stimuli that increase the cellular AMP/ATP ratio. AMPK regulates the activities of a number of key metabolic enzymes through phosphorylation. It protects cells from stresses that cause ATP depletion by switching off ATP-consuming biosynthetic pathways. Alternatively spliced transcript variants encoding distinct isoforms have been observed. [provided by RefSeq, Jul 2008]

### Immunogen information

**Gene ID:**

5562

**Uniprot**

Q13131

**Synonyms:**

AMPK; AMPKa1

**Immunogen:**

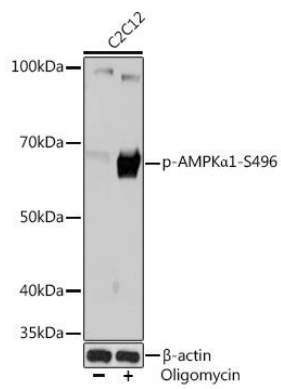
A phospho specific peptide corresponding to residues surrounding S496 of human AMPK alpha 1

**Storage:**

Store at -20°C. Avoid freeze / thaw cycles. Buffer: PBS with 0.02% sodium azide, 0.05% BSA, 50% glycerol, pH7.3.

## Product Images

---



Western blot - Phospho-AMPKalpha1-S496 Rabbit mAb (CABP1002)