

Phospho-Estrogen Receptor alpha-S118 Rabbit Monoclonal Antibody

CABP1004



Product Information

Size:

20uL, 50uL, 100uL

Observed MW:

66kDa

Calculated MW:

66kDa

Applications:

WB

Reactivity:

Mouse

Antibody Information

Recommended dilutions:

WB 1:500 - 1:2000

Source:

Rabbit

Isotype:

IgG

Purification:

Affinity purification

Protein Background

This gene encodes an estrogen receptor, a ligand-activated transcription factor composed of several domains important for hormone binding, DNA binding, and activation of transcription. The protein localizes to the nucleus where it may form a homodimer or a heterodimer with estrogen receptor 2. Estrogen and its receptors are essential for sexual development and reproductive function, but also play a role in other tissues such as bone. Estrogen receptors are also involved in pathological processes including breast cancer, endometrial cancer, and osteoporosis. Alternative promoter usage and alternative splicing result in dozens of transcript variants, but the full-length nature of many of these variants has not been determined. [provided by RefSeq, Mar 2014]

Immunogen information

Gene ID:

2099

Uniprot

P03372

Synonyms:

ER; ESR; ESRA; ESTRR; Era; NR3A1

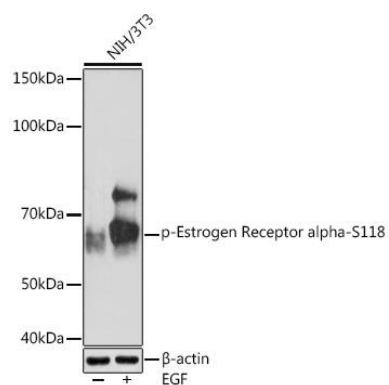
Immunogen:

A phospho specific peptide corresponding to residues surrounding S118 of human Estrogen Receptor alpha

Storage:

Store at -20°C. Avoid freeze / thaw cycles. Buffer: PBS with 0.02% sodium azide, 0.05% BSA, 50% glycerol, pH7.3.

Product Images



Western blot - Phospho-Estrogen Receptor alpha-S118
Rabbit mAb (CABP1004)