

Phospho-CDK2-Y15 Rabbit Monoclonal Antibody



CABP1005

Product Information

Size:

20uL, 50uL, 100uL

Observed MW:

34kDa

Calculated MW:

34kDa

Applications:

WB

Reactivity:

Human, Mouse

Antibody Information

Recommended dilutions:

WB 1:500 - 1:2000

Source:

Rabbit

Isotype:

IgG

Purification:

Affinity purification

Protein Background

This gene encodes a member of a family of serine/threonine protein kinases that participate in cell cycle regulation. The encoded protein is the catalytic subunit of the cyclin-dependent protein kinase complex, which regulates progression through the cell cycle. Activity of this protein is especially critical during the G1 to S phase transition. This protein associates with and regulated by other subunits of the complex including cyclin A or E, CDK inhibitor p21Cip1 (CDKN1A), and p27Kip1 (CDKN1B). Alternative splicing results in multiple transcript variants. [provided by RefSeq, Mar 2014]

Immunogen information

Gene ID:

1017

Uniprot

P24941

Synonyms:

CDKN2; p33(CDK2)

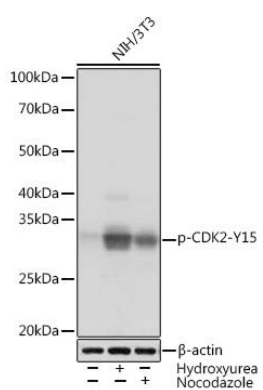
Immunogen:

A phospho specific peptide corresponding to residues surrounding Y15 of human CDK2

Storage:

Store at -20°C. Avoid freeze / thaw cycles. Buffer: PBS with 0.02% sodium azide, 0.05% BSA, 50% glycerol, pH7.3.

Product Images



Western blot - Phospho-CDK2-Y15 Rabbit mAb (CABP1005)