

Phospho-Bad-S112 Rabbit Monoclonal Antibody



CABP1010

Product Information

Size:

20uL, 50uL, 100uL

Observed MW:

23KDa

Calculated MW:

23kDa

Applications:

WB

Reactivity:

Human, Mouse

Protein Background

The protein encoded by this gene is a member of the BCL-2 family. BCL-2 family members are known to be regulators of programmed cell death. This protein positively regulates cell apoptosis by forming heterodimers with BCL-xL and BCL-2, and reversing their death repressor activity. Proapoptotic activity of this protein is regulated through its phosphorylation. Protein kinases AKT and MAP kinase, as well as protein phosphatase calcineurin were found to be involved in the regulation of this protein. Alternative splicing of this gene results in two transcript variants which encode the same isoform. [provided by RefSeq, Jul 2008]

Immunogen information

Gene ID:

572

Uniprot

Q92934

Synonyms:

BBC2; BCL2L8

Antibody Information

Recommended dilutions:

WB 1:500 - 1:2000

Source:

Rabbit

Isotype:

IgG

Purification:

Affinity purification

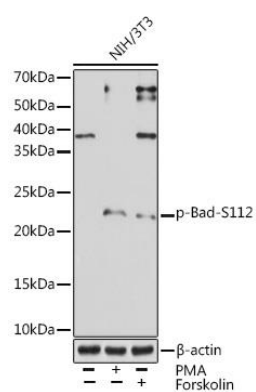
Immunogen:

A phospho specific peptide corresponding to residues surrounding S112 of human Bad

Storage:

Store at -20°C. Avoid freeze / thaw cycles. Buffer: PBS with 0.02% sodium azide, 0.05% BSA, 50% glycerol, pH7.3.

Product Images



Western blot - Phospho-Bad-S112 Rabbit mAb (CABP1010)