

Phospho-Raf1-S259 Rabbit Monoclonal Antibody



CABP1012

Product Information

Size:

20uL, 50uL, 100uL

Observed MW:

73-75KDa

Calculated MW:

74kDa

Applications:

WB

Reactivity:

Human, Rat

Antibody Information

Recommended dilutions:

WB 1:500 - 1:2000

Source:

Rabbit

Isotype:

IgG

Purification:

Affinity purification

Protein Background

This gene is the cellular homolog of viral raf gene (v-raf). The encoded protein is a MAP kinase kinase kinase (MAP3K), which functions downstream of the Ras family of membrane associated GTPases to which it binds directly. Once activated, the cellular RAF1 protein can phosphorylate to activate the dual specificity protein kinases MEK1 and MEK2, which in turn phosphorylate to activate the serine/threonine specific protein kinases, ERK1 and ERK2. Activated ERKs are pleiotropic effectors of cell physiology and play an important role in the control of gene expression involved in the cell division cycle, apoptosis, cell differentiation and cell migration. Mutations in this gene are associated with Noonan syndrome 5 and LEOPARD syndrome 2. [provided by RefSeq, Jul 2008]

Immunogen information

Gene ID:

5894

Uniprot

P04049

Synonyms:

CMD1NN; CRAF; NS5; Raf-1; c-Raf

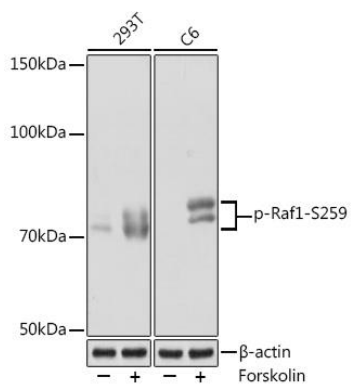
Immunogen:

A phospho specific peptide corresponding to residues surrounding S259 of human Raf1

Storage:

Store at -20°C. Avoid freeze / thaw cycles. Buffer: PBS with 0.02% sodium azide, 0.05% BSA, 50% glycerol, pH7.3.

Product Images



Western blot - Phospho-Raf1-S259 Rabbit mAb (CABP1012)