

Phospho-GATA3-S308 Rabbit Monoclonal Antibody

CABP1015



Product Information

Size:

20uL, 50uL, 100uL

Observed MW:

60KDa

Calculated MW:

48kDa

Applications:

WB

Reactivity:

Human, Mouse

Protein Background

This gene encodes a protein which belongs to the GATA family of transcription factors. The protein contains two GATA-type zinc fingers and is an important regulator of T-cell development and plays an important role in endothelial cell biology. Defects in this gene are the cause of hypoparathyroidism with sensorineural deafness and renal dysplasia. [provided by RefSeq, Nov 2009]

Immunogen information

Gene ID:

2625

Uniprot

P23771

Synonyms:

HDR; HDRS

Antibody Information

Recommended dilutions:

WB 1:500 - 1:2000

Source:

Rabbit

Isotype:

IgG

Purification:

Affinity purification

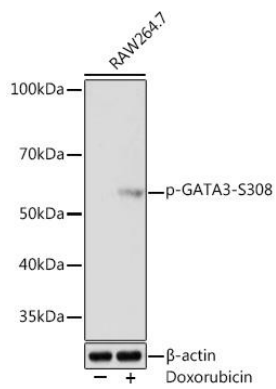
Immunogen:

A phospho specific peptide corresponding to residues surrounding S308 of human GATA3

Storage:

Store at -20°C. Avoid freeze / thaw cycles. Buffer: PBS with 0.02% sodium azide, 0.05% BSA, 50% glycerol, pH7.3.

Product Images



Western blot - Phospho-GATA3-S308 Rabbit mAb (CABP1015)