

Phospho-Rac1/Cdc42-S71 Rabbit Monoclonal Antibody

CABP1018



Product Information

Size:

20uL, 50uL, 100uL

Observed MW:

24KDa

Calculated MW:

24kDa

Applications:

WB

Reactivity:

Human

Protein Background

The protein encoded by this gene is a small GTPase of the Rho-subfamily, which regulates signaling pathways that control diverse cellular functions including cell morphology, migration, endocytosis and cell cycle progression. This protein is highly similar to *Saccharomyces cerevisiae* Cdc 42, and is able to complement the yeast *cdc42-1* mutant. The product of oncogene Dbl was reported to specifically catalyze the dissociation of GDP from this protein. This protein could regulate actin polymerization through its direct binding to Neural Wiskott-Aldrich syndrome protein (N-WASP), which subsequently activates Arp2/3 complex. Alternative splicing of this gene results in multiple transcript variants. Pseudogenes of this gene have been identified on chromosomes 3, 4, 5, 7, 8 and 20. [provided by RefSeq, Apr 2013]

Immunogen information

Gene ID:

998/5879

Uniprot

P60953/P63000

Antibody Information

Recommended dilutions:

WB 1:500 - 1:2000

Source:

Rabbit

Isotype:

IgG

Purification:

Affinity purification

Synonyms:

CDC42Hs; G25K; TKS

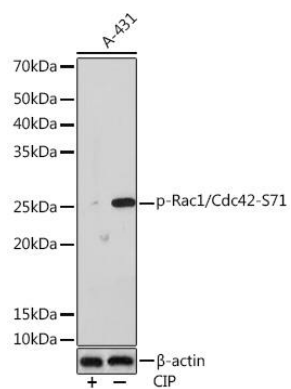
Immunogen:

A phospho specific peptide corresponding to residues surrounding S71 of human Rac1/Cdc42

Storage:

Store at -20°C. Avoid freeze / thaw cycles. Buffer: PBS with 0.02% sodium azide, 0.05% BSA, 50% glycerol, pH7.3.

Product Images



Western blot - Phospho-Rac1/Cdc42-S71 Rabbit mAb (CABP1018)