

# Phospho-Smad5-S463/S465 Rabbit Monoclonal Antibody

## CABP1023



### Product Information

**Size:**

20uL, 50uL, 100uL

**Observed MW:**

52KDa

**Calculated MW:**

52kDa

**Applications:**

WB

**Reactivity:**

Human

### Protein Background

The protein encoded by this gene is involved in the transforming growth factor beta signaling pathway that results in an inhibition of the proliferation of hematopoietic progenitor cells. The encoded protein is activated by bone morphogenetic proteins type 1 receptor kinase, and may be involved in cancer. Alternative splicing results in multiple transcript variants. [provided by RefSeq, Feb 2014]

### Immunogen information

**Gene ID:**

4090

**Uniprot**

Q99717

**Synonyms:**

DWFC; JV5-1; MADH5

### Antibody Information

**Recommended dilutions:**

WB 1:500 - 1:2000

**Source:**

Rabbit

**Isotype:**

IgG

**Purification:**

Affinity purification

**Immunogen:**

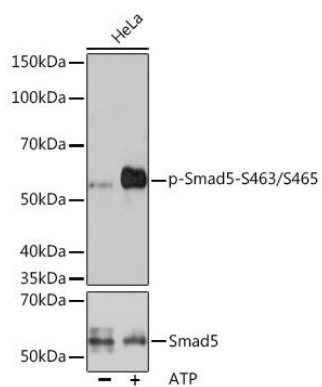
A phospho specific peptide corresponding to residues surrounding S463/S465 of human Smad5

**Storage:**

Store at -20°C. Avoid freeze / thaw cycles. Buffer: PBS with 0.02% sodium azide, 0.05% BSA, 50% glycerol, pH7.3.

## Product Images

---



Western blot - Phospho-Smad5-S463/S465 Rabbit mAb (CABP1023)