

# Phospho-PLK1-T210 Rabbit Monoclonal Antibody



CABP1025

---

## Product Information

### Size:

20uL, 50uL, 100uL

### Observed MW:

68KDa

### Calculated MW:

68kDa

### Applications:

WB

### Reactivity:

Human

## Protein Background

The Ser/Thr protein kinase encoded by this gene belongs to the CDC5/Polo subfamily. It is highly expressed during mitosis and elevated levels are found in many different types of cancer. Depletion of this protein in cancer cells dramatically inhibited cell proliferation and induced apoptosis; hence, it is a target for cancer therapy. [provided by RefSeq, Sep 2015]

## Immunogen information

### Gene ID:

5347

### Uniprot

P53350

### Synonyms:

PLK; STPK13

## Antibody Information

### Recommended dilutions:

WB 1:500 - 1:2000

### Source:

Rabbit

### Isotype:

IgG

### Purification:

Affinity purification

### Immunogen:

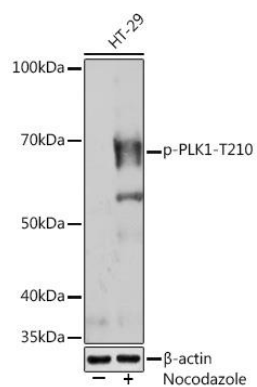
A phospho specific peptide corresponding to residues surrounding T210 of human PLK1

### Storage:

Store at -20°C. Avoid freeze / thaw cycles. Buffer: PBS with 0.02% sodium azide, 0.05% BSA, 50% glycerol, pH7.3.

## Product Images

---



Western blot - Phospho-PLK1-T210 Rabbit mAb (CABP1025)