

# Phospho-Tau-S396 Rabbit Monoclonal Antibody



CABP1028

## Product Information

### Size:

20uL, 50uL, 100uL

### Observed MW:

60KDa

### Calculated MW:

50-80kDa

### Applications:

WB IHC

### Reactivity:

Human, Mouse, Rat

## Antibody Information

### Recommended dilutions:

WB 1:500 - 1:2000 IHC 1:50  
- 1:200

### Source:

Rabbit

### Isotype:

IgG

### Purification:

Affinity purification

## Protein Background

This gene encodes the microtubule-associated protein tau (MAPT) whose transcript undergoes complex, regulated alternative splicing, giving rise to several mRNA species. MAPT transcripts are differentially expressed in the nervous system, depending on stage of neuronal maturation and neuron type. MAPT gene mutations have been associated with several neurodegenerative disorders such as Alzheimer's disease, Pick's disease, frontotemporal dementia, cortico-basal degeneration and progressive supranuclear palsy. [provided by RefSeq, Jul 2008]

## Immunogen information

### Gene ID:

4137

### Uniprot

P10636

### Synonyms:

DDPAC; FTDP-17; MAPTL; MSTD; MTBT1; MTBT2; PPND; PPP1R103;  
TAU

### Immunogen:

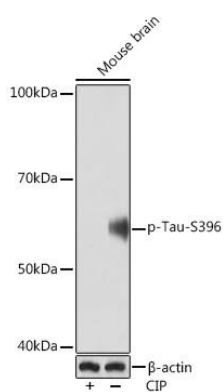
A phospho specific peptide corresponding to residues surrounding  
S396 of human Tau

### Storage:

Store at -20°C. Avoid freeze / thaw cycles. Buffer: PBS with 0.02%  
sodium azide, 0.05% BSA, 50% glycerol, pH7.3.

## Product Images

---



Western blot - Phospho-Tau-S396 Rabbit mAb (CABP1028)