

Phospho-Hsp27-S78 Rabbit Monoclonal Antibody

CABP1032



Product Information

Size:

20uL, 50uL, 100uL

Observed MW:

27KDa

Calculated MW:

27kDa

Applications:

WB

Reactivity:

Human, Mouse

Antibody Information

Recommended dilutions:

WB 1:500 - 1:2000

Source:

Rabbit

Isotype:

IgG

Purification:

Affinity purification

Protein Background

The protein encoded by this gene is induced by environmental stress and developmental changes. The encoded protein is involved in stress resistance and actin organization and translocates from the cytoplasm to the nucleus upon stress induction. Defects in this gene are a cause of Charcot-Marie-Tooth disease type 2F (CMT2F) and distal hereditary motor neuropathy (dHMN). [provided by RefSeq, Oct 2008]

Immunogen information

Gene ID:

3315

Uniprot

P04792

Synonyms:

CMT2F; HEL-S-102; HMN2B; HS.76067; HSP27; HSP28; Hsp25; SRP27

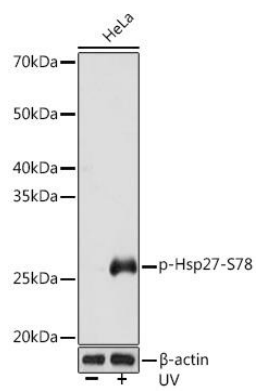
Immunogen:

A phospho specific peptide corresponding to residues surrounding S78 of human Hsp27

Storage:

Store at -20°C. Avoid freeze / thaw cycles. Buffer: PBS with 0.02% sodium azide, 0.05% BSA, 50% glycerol, pH7.3.

Product Images



Western blot - Phospho-Hsp27-S78 Rabbit mAb (CABP1032)