

Phospho-Chk1-S296 Rabbit Monoclonal Antibody



CABP1047

Product Information

Size:

20uL, 50uL, 100uL

Observed MW:

54kDa

Calculated MW:

54kDa

Applications:

WB

Reactivity:

Human

Antibody Information

Recommended dilutions:

WB 1:500 - 1:2000

Source:

Rabbit

Isotype:

IgG

Purification:

Affinity purification

Protein Background

The protein encoded by this gene belongs to the Ser/Thr protein kinase family. It is required for checkpoint mediated cell cycle arrest in response to DNA damage or the presence of unreplicated DNA. This protein acts to integrate signals from ATM and ATR, two cell cycle proteins involved in DNA damage responses, that also associate with chromatin in meiotic prophase I. Phosphorylation of CDC25A protein phosphatase by this protein is required for cells to delay cell cycle progression in response to double-strand DNA breaks. Several alternatively spliced transcript variants have been found for this gene. [provided by RefSeq, Oct 2011]

Immunogen information

Gene ID:

1111

Uniprot

O14757

Synonyms:

CHK1

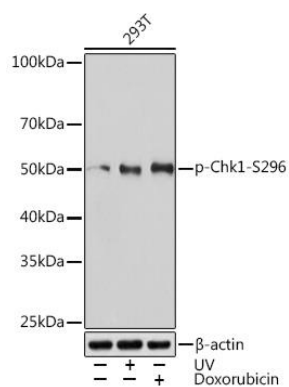
Immunogen:

A phospho specific peptide corresponding to residues surrounding S296 of human Chk1

Storage:

Store at -20°C. Avoid freeze / thaw cycles. Buffer: PBS with 0.02% sodium azide, 0.05% BSA, 50% glycerol, pH7.3.

Product Images



Western blot - Phospho-Chk1-S296 Rabbit mAb (CABP1047)