

Phospho-CEBPB-T235 Rabbit Polyclonal Antibody



CABP1055

Product Information

Size:

20uL, 50uL, 100uL, 200uL

Observed MW:

38KDa

Calculated MW:

36kDa

Applications:

WB

Reactivity:

Human, Mouse

Protein Background

This intronless gene encodes a transcription factor that contains a basic leucine zipper (bZIP) domain. The encoded protein functions as a homodimer but can also form heterodimers with CCAAT/enhancer-binding proteins alpha, delta, and gamma. Activity of this protein is important in the regulation of genes involved in immune and inflammatory responses, among other processes. The use of alternative in-frame AUG start codons results in multiple protein isoforms, each with distinct biological functions.

Immunogen information

Gene ID:

1051

Uniprot

P17676

Synonyms:

C/EBP-beta; IL6DBP; NF-IL6; TCF5; CEBP beta; CEBPB

Antibody Information

Recommended dilutions:

WB 1:500 - 1:2000

Source:

Rabbit

Isotype:

IgG

Purification:

Affinity purification

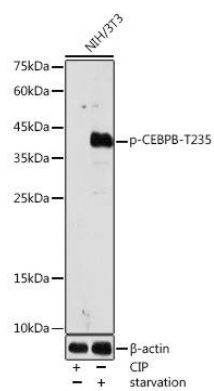
Immunogen:

A phospho specific peptide corresponding to residues surrounding T235 of human CEBPB.

Storage:

Store at -20°C. Avoid freeze / thaw cycles. Buffer: PBS with 0.02% sodium azide, 50% glycerol, pH7.3.

Product Images



Western blot - Phospho-CEBPB-T235 Rabbit pAb
(CABP1055)