

Phospho-PXN-Y118 Rabbit Polyclonal Antibody



CABP1057

Product Information

Size:

20uL, 50uL, 100uL, 200uL

Observed MW:

64kDa

Calculated MW:

64kDa

Applications:

WB

Reactivity:

Human, Mouse

Protein Background

This gene encodes a cytoskeletal protein involved in actin-membrane attachment at sites of cell adhesion to the extracellular matrix (focal adhesion). Alternatively spliced transcript variants encoding different isoforms have been described for this gene. These isoforms exhibit different expression pattern, and have different biochemical, as well as physiological properties (PMID:9054445).

Immunogen information

Gene ID:

5829

Uniprot

P49023

Synonyms:

Paxillin; PXN; paxillin

Antibody Information

Recommended dilutions:

WB 1:500 - 1:2000

Source:

Rabbit

Isotype:

IgG

Purification:

Affinity purification

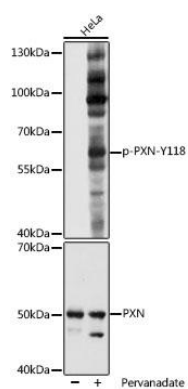
Immunogen:

A phospho synthetic peptide corresponding to residues surrounding Y118 of human PXN.

Storage:

Store at -20°C. Avoid freeze / thaw cycles. Buffer: PBS with 0.02% sodium azide, 50% glycerol, pH7.3.

Product Images



Western blot - Phospho-PXN-Y118 Rabbit pAb (CABP1057)