

Phospho-p70 S6 kinase-T389 Rabbit Polyclonal Antibody

CABP1059



Product Information

Size:

20uL, 50uL, 100uL, 200uL

Observed MW:

85kDa/90kDa

Calculated MW:

59kDa

Applications:

WB

Reactivity:

Human, Mouse, Rat

Antibody Information

Recommended dilutions:

WB 1:500 - 1:2000

Source:

Rabbit

Isotype:

IgG

Purification:

Affinity purification

Protein Background

This gene encodes a member of the ribosomal S6 kinase family of serine/threonine kinases. The encoded protein responds to mTOR (mammalian target of rapamycin) signaling to promote protein synthesis, cell growth, and cell proliferation. Activity of this gene has been associated with human cancer. Alternatively spliced transcript variants have been observed. The use of alternative translation start sites results in isoforms with longer or shorter N-termini which may differ in their subcellular localizations. There are two pseudogenes for this gene on chromosome 17.

Immunogen information

Gene ID:

6198

Uniprot

P23443

Synonyms:

PS6K; S6K; S6K-beta-1; S6K1; STK14A; p70 S6KA; p70(S6K)-alpha; p70-S6K; p70-alpha; P70 S6K; RPS6KB1; p70S6KA

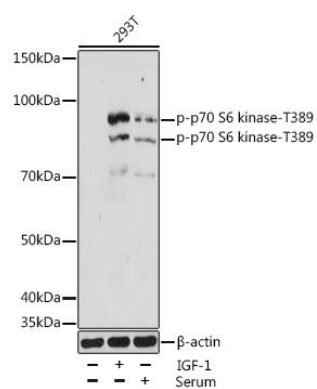
Immunogen:

A phospho synthetic peptide corresponding to residues surrounding T389 of human P70S6K1.

Storage:

Store at -20°C. Avoid freeze / thaw cycles. Buffer: PBS with 0.02% sodium azide, 50% glycerol, pH7.3.

Product Images



Western blot - Phospho-p70 S6 kinase-T389 Rabbit pAb (CABP1059)