

# Phospho-Na<sup>+</sup>/K<sup>+</sup>-ATPase-S16 Rabbit Polyclonal Antibody

## CABP1065



### Product Information

**Size:**

20uL, 50uL, 100uL, 200uL

**Observed MW:**

112kDa

**Calculated MW:**

112kDa

**Applications:**

WB

**Reactivity:**

Human, Mouse, Rat

### Antibody Information

**Recommended dilutions:**

WB 1:500 - 1:2000

**Source:**

Rabbit

**Isotype:**

IgG

**Purification:**

Affinity purification

### Protein Background

The protein encoded by this gene belongs to the family of P-type cation transport ATPases, and to the subfamily of Na<sup>+</sup>/K<sup>+</sup> -ATPases. Na<sup>+</sup>/K<sup>+</sup> -ATPase is an integral membrane protein responsible for establishing and maintaining the electrochemical gradients of Na and K ions across the plasma membrane. These gradients are essential for osmoregulation, for sodium-coupled transport of a variety of organic and inorganic molecules, and for electrical excitability of nerve and muscle. This enzyme is composed of two subunits, a large catalytic subunit (alpha) and a smaller glycoprotein subunit (beta). The catalytic subunit of Na<sup>+</sup>/K<sup>+</sup> -ATPase is encoded by multiple genes. This gene encodes an alpha 1 subunit. Multiple transcript variants encoding different isoforms have been found for this gene.

### Immunogen information

**Gene ID:**

476

**Uniprot**

P05023

**Synonyms:**

ATP1A1; ATPase Na<sup>+</sup>/K<sup>+</sup> transporting subunit alpha 1; ATP1A; CMT2DD; HOMGSMR2

**Immunogen:**

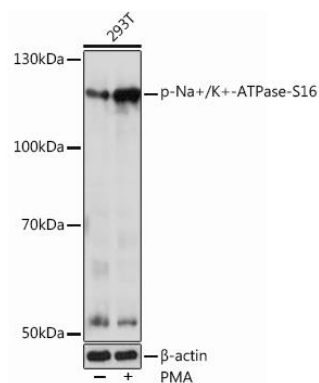
A phospho specific peptide corresponding to residues surrounding S16 of human Na<sup>+</sup>/K<sup>+</sup>-ATPase.

**Storage:**

Store at -20°C. Avoid freeze / thaw cycles. Buffer: PBS with 0.02% sodium azide, 50% glycerol, pH7.3.

## Product Images

---



Western blot - Phospho-Na<sup>+</sup>/K<sup>+</sup>-ATPase-S16 Rabbit pAb (CABP1065)