

# Phospho-ATP2A2-Thr484 Rabbit Polyclonal Antibody

## CABP1070



### Product Information

**Size:**

20uL, 50uL, 100uL, 200uL

**Observed MW:**

114KkDa/140kDa

**Calculated MW:**

109kDa/111kDa/114kDa

**Applications:**

WB

**Reactivity:**

Human, Mouse, Rat

### Antibody Information

**Recommended dilutions:**

WB 1:500 - 1:2000

**Source:**

Rabbit

**Isotype:**

IgG

**Purification:**

Affinity purification

### Protein Background

This gene encodes one of the SERCA Ca(2+)-ATPases, which are intracellular pumps located in the sarcoplasmic or endoplasmic reticula of muscle cells. This enzyme catalyzes the hydrolysis of ATP coupled with the translocation of calcium from the cytosol into the sarcoplasmic reticulum lumen, and is involved in regulation of the contraction/relaxation cycle. Mutations in this gene cause Darier-White disease, also known as keratosis follicularis, an autosomal dominant skin disorder characterized by loss of adhesion between epidermal cells and abnormal keratinization. Alternative splicing results in multiple transcript variants encoding different isoforms. [provided by RefSeq, Oct 2008]

### Immunogen information

**Gene ID:**

488

**Uniprot**

P16615

**Synonyms:**

ATP2B; DAR; DD; SERCA2; ATP2A2/SERCA2; ATP2A2

**Immunogen:**

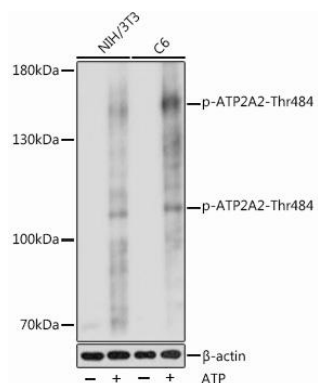
A phospho synthetic peptide corresponding to residues surrounding Thr484 of human ATP2A2.

**Storage:**

Store at -20°C. Avoid freeze / thaw cycles. Buffer: PBS with 0.02% sodium azide, 50% glycerol, pH7.3.

## Product Images

---



Western blot - Phospho-ATP2A2-Thr484 Rabbit pAb (CABP1070)