

Phospho-Bcl-2-S87 Rabbit Polyclonal Antibody



CABP1071

Product Information

Size:

20uL, 50uL, 100uL, 200uL

Observed MW:

28kDa

Calculated MW:

22kDa/26kDa

Applications:

WB

Reactivity:

Human, Rat

Protein Background

This gene encodes an integral outer mitochondrial membrane protein that blocks the apoptotic death of some cells such as lymphocytes. Constitutive expression of BCL2, such as in the case of translocation of BCL2 to Ig heavy chain locus, is thought to be the cause of follicular lymphoma. Alternative splicing results in multiple transcript variants. [provided by RefSeq, Feb 2016]

Immunogen information

Gene ID:

596

Uniprot

P10415

Synonyms:

Bcl-2; PPP1R50; BCL2

Antibody Information

Recommended dilutions:

WB 1:500 - 1:2000

Source:

Rabbit

Isotype:

IgG

Purification:

Affinity purification

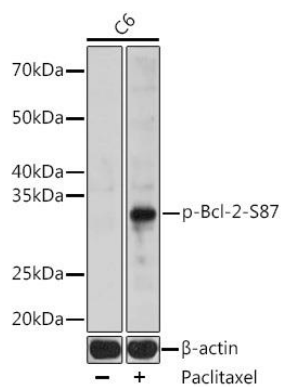
Immunogen:

A phospho synthetic peptide corresponding to residues surrounding S87 of human Bcl-2.

Storage:

Store at -20°C. Avoid freeze / thaw cycles. Buffer: PBS with 0.02% sodium azide, 50% glycerol, pH7.3.

Product Images



Western blot - Phospho-Bcl-2-S87 Rabbit pAb (CABP1071)