

Phospho-DLG2-Y340 Rabbit Polyclonal Antibody



CABP1080

Product Information

Size:

20uL, 50uL, 100uL, 200uL

Observed MW:

105kDa

Calculated MW:

Applications:

WB

Reactivity:

Human, Mouse, Rat

Protein Background

This gene encodes a member of the membrane-associated guanylate kinase (MAGUK) family. The encoded protein forms a heterodimer with a related family member that may interact at postsynaptic sites to form a multimeric scaffold for the clustering of receptors, ion channels, and associated signaling proteins. Multiple transcript variants encoding different isoforms have been found for this gene. Additional transcript variants have been described, but their full-length nature is not known. [provided by RefSeq, Dec 2008]

Immunogen information

Gene ID:

1740

Uniprot

Q15700

Synonyms:

PPP1R58; PSD-93; PSD93

Antibody Information

Recommended dilutions:

WB 1:500 - 1:2000

Source:

Rabbit

Isotype:

IgG

Immunogen:

A phospho synthetic peptide corresponding to residues surrounding Y340 of human DLG2.

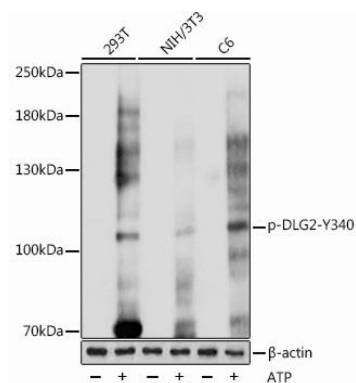
Storage:

Store at -20°C. Avoid freeze / thaw cycles. Buffer: PBS with 0.02% sodium azide, 50% glycerol, pH7.3.

Purification:

Affinity purification

Product Images



Western blot - Phospho-DLG2-Y340 Rabbit pAb (CABP1080)