

Phospho-INSR-Y1189/Y1190 + IGF1R-Y1165/Y1166 Rabbit Polyclonal Antibody

CABP1086



Product Information

Size:

20uL, 50uL, 100uL, 200uL

Observed MW:

100kDa

Calculated MW:

154kDa/155kDa/156kDa

Applications:

WB

Reactivity:

Human, Mouse, Rat

Antibody Information

Recommended dilutions:

WB 1:500 - 1:2000

Source:

Rabbit

Isotype:

IgG

Purification:

Affinity purification

Protein Background

This receptor binds insulin-like growth factor with a high affinity. It has tyrosine kinase activity. The insulin-like growth factor I receptor plays a critical role in transformation events. Cleavage of the precursor generates alpha and beta subunits. It is highly overexpressed in most malignant tissues where it functions as an anti-apoptotic agent by enhancing cell survival. Alternatively spliced transcript variants encoding distinct isoforms have been found for this gene. [provided by RefSeq, May 2014]

Immunogen information

Gene ID:

3480/3643

Uniprot

P08069/P06213

Synonyms:

IGF1R/INSR

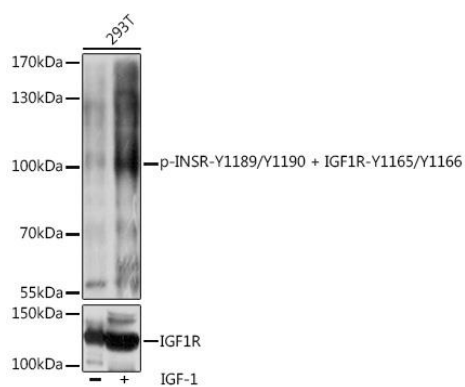
Immunogen:

A phospho specific peptide corresponding to residues surrounding Y1189/Y1190 of human INSR and Y1165/Y1166 of human IGF1R.

Storage:

Store at -20°C. Avoid freeze / thaw cycles. Buffer: PBS with 0.02% sodium azide, 50% glycerol, pH7.3.

Product Images



Western blot - Phospho-INSR-Y1189/Y1190 + IGF1R-Y1165/Y1166 Rabbit pAb (CABP1086)