

Phospho-ATG13-Ser355 Rabbit Polyclonal Antibody

CABP1089



Product Information

Size:

20uL, 50uL, 100uL, 200uL

Observed MW:

60kDa

Calculated MW:

44kDa/52kDa/56kDa/60kDa

Applications:

WB

Reactivity:

Human, Mouse, Rat

Antibody Information

Recommended dilutions:

WB 1:500 - 1:2000

Source:

Rabbit

Isotype:

IgG

Purification:

Affinity purification

Protein Background

The protein encoded by this gene is an autophagy factor and a target of the TOR kinase signaling pathway. The encoded protein is essential for autophagosome formation and mitophagy. [provided by RefSeq, Oct 2016]

Immunogen information

Gene ID:

9776

Uniprot

O75143

Synonyms:

KIAA0652; PARATARG8; ATG13

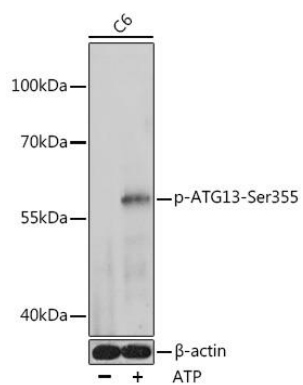
Immunogen:

A phospho synthetic peptide corresponding to residues surrounding Ser355 of human ATG13.

Storage:

Store at -20°C. Avoid freeze / thaw cycles. Buffer: PBS with 0.02% sodium azide, 50% glycerol, pH7.3.

Product Images



Western blot - Phospho-ATG13-Ser355 Rabbit pAb (CABP1089)