

Phospho-FOXO1-S319 Rabbit Polyclonal Antibody

CABP1090



Product Information

Size:

20uL, 50uL, 100uL, 200uL

Observed MW:

90kDa

Calculated MW:

69kDa

Applications:

WB

Reactivity:

Human, Mouse, Rat

Protein Background

This gene belongs to the forkhead family of transcription factors which are characterized by a distinct forkhead domain. The specific function of this gene has not yet been determined; however, it may play a role in myogenic growth and differentiation. Translocation of this gene with PAX3 has been associated with alveolar rhabdomyosarcoma. [provided by RefSeq, Jul 2008]

Immunogen information

Gene ID:

2308

Uniprot

Q12778

Synonyms:

FKH1; FKHR; FOXO1A; FOXO1

Antibody Information

Recommended dilutions:

WB 1:500 - 1:2000

Source:

Rabbit

Isotype:

IgG

Purification:

Affinity purification

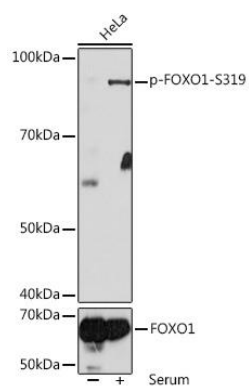
Immunogen:

A phospho synthetic peptide corresponding to residues surrounding S319 of human FOXO1.

Storage:

Store at -20°C. Avoid freeze / thaw cycles. Buffer: PBS with 0.02% sodium azide, 50% glycerol, pH7.3.

Product Images



Western blot - Phospho-FOXO1-S319 Rabbit pAb
(CABP1090)