

# Phospho-p70 S6 kinase-T421/S424 Rabbit Polyclonal Antibody

## CABP1106



### Product Information

**Size:**

20uL, 50uL, 100uL, 200uL

**Observed MW:**

70kDa

**Calculated MW:**

51kDa/52kDa/56kDa/59kDa

**Applications:**

WB

**Reactivity:**

Human, Mouse, Rat

### Antibody Information

**Recommended dilutions:**

WB 1:500 - 1:2000

**Source:**

Rabbit

**Isotype:**

IgG

**Purification:**

Affinity purification

### Protein Background

This gene encodes a member of the ribosomal S6 kinase family of serine/threonine kinases. The encoded protein responds to mTOR (mammalian target of rapamycin) signaling to promote protein synthesis, cell growth, and cell proliferation. Activity of this gene has been associated with human cancer. Alternatively spliced transcript variants have been observed. The use of alternative translation start sites results in isoforms with longer or shorter N-termini which may differ in their subcellular localizations. There are two pseudogenes for this gene on chromosome 17. [provided by RefSeq, Jan 2013]

### Immunogen information

**Gene ID:**

6198

**Uniprot**

P23443

**Synonyms:**

PS6K; S6K; S6K-beta-1; S6K1; STK14A; p70 S6KA; p70(S6K)-alpha; p70-S6K; p70-alpha; P70 S6K; RPS6KB1; p70S6KA

**Immunogen:**

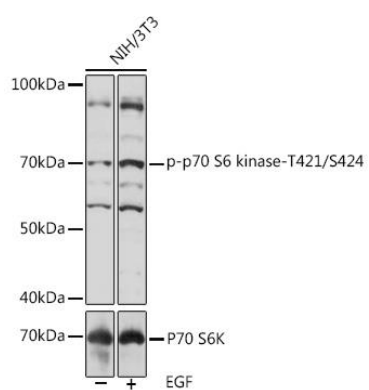
A phospho specific peptide corresponding to residues surrounding T421/S424 of human RPS6KB1.

**Storage:**

Store at -20°C. Avoid freeze / thaw cycles. Buffer: PBS with 0.02% sodium azide, 50% glycerol, pH7.3.

## Product Images

---



Western blot - Phospho-p70 S6 kinase-T421/S424 Rabbit pAb (CABP1106)