

# Phospho-TH-S40 Rabbit Polyclonal Antibody



CABP1109

---

## Product Information

### Size:

20uL, 50uL, 100uL, 200uL

### Observed MW:

Refer to figures

### Calculated MW:

44kDa/45kDa/55kDa/56kDa/  
58kDa

### Applications:

WB

### Reactivity:

Rat

## Protein Background

The protein encoded by this gene is involved in the conversion of tyrosine to dopamine. It is the rate-limiting enzyme in the synthesis of catecholamines, hence plays a key role in the physiology of adrenergic neurons. Mutations in this gene have been associated with autosomal recessive Segawa syndrome. Alternatively spliced transcript variants encoding different isoforms have been noted for this gene. [provided by RefSeq, Jul 2008]

## Immunogen information

### Gene ID:

7054

### Uniprot

P07101

### Synonyms:

DYT14; DYT5b; TYH; TH

## Antibody Information

### Recommended dilutions:

WB 1:500 - 1:2000

### Source:

Rabbit

### Isotype:

IgG

### Purification:

Affinity purification

### Immunogen:

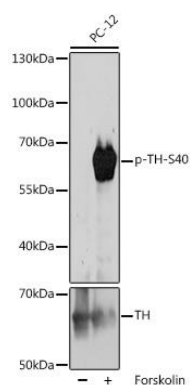
A phospho specific peptide corresponding to residues surrounding S40 of human TH.

### Storage:

Store at -20°C. Avoid freeze / thaw cycles. Buffer: PBS with 0.02% sodium azide, 50% glycerol, pH7.3.

## Product Images

---



Western blot - Phospho-TH-S40 Rabbit pAb (CABP1109)