

Phospho-EGFR-Y869 Rabbit Polyclonal Antibody



CABP1113

Product Information

Size:

20uL, 50uL, 100uL, 200uL

Observed MW:

134kDa

Calculated MW:

44kDa/69kDa/77kDa/134kDa

Applications:

WB

Reactivity:

Mouse, Rat

Antibody Information

Recommended dilutions:

WB 1:500 - 1:2000

Source:

Rabbit

Isotype:

IgG

Purification:

Affinity purification

Protein Background

The protein encoded by this gene is a transmembrane glycoprotein that is a member of the protein kinase superfamily. This protein is a receptor for members of the epidermal growth factor family. EGFR is a cell surface protein that binds to epidermal growth factor. Binding of the protein to a ligand induces receptor dimerization and tyrosine autophosphorylation and leads to cell proliferation. Mutations in this gene are associated with lung cancer. [provided by RefSeq, Jun 2016]

Immunogen information

Gene ID:

1956

Uniprot

P00533

Synonyms:

EGFR; ERBB; ERBB1; HER1; NISBD2; PIG61; mENA; epidermal growth factor receptor

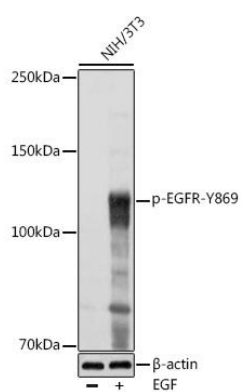
Immunogen:

A phospho specific peptide corresponding to residues surrounding Y869 of human EGFR.

Storage:

Store at -20°C. Avoid freeze / thaw cycles. Buffer: PBS with 0.02% sodium azide, 50% glycerol, pH7.3.

Product Images



Western blot - Phospho-EGFR-Y869 Rabbit pAb
(CABP1113)