

# Phospho-EGFR-T678 Rabbit Polyclonal Antibody



CABP1114

## Product Information

### Size:

20uL, 50uL, 100uL, 200uL

### Observed MW:

180kDa

### Calculated MW:

44kDa/69kDa/77kDa/134kDa

### Applications:

WB

### Reactivity:

Mouse

## Antibody Information

### Recommended dilutions:

WB 1:500 - 1:2000

### Source:

Rabbit

### Isotype:

IgG

### Purification:

Affinity purification

## Protein Background

The protein encoded by this gene is a transmembrane glycoprotein that is a member of the protein kinase superfamily. This protein is a receptor for members of the epidermal growth factor family. EGFR is a cell surface protein that binds to epidermal growth factor. Binding of the protein to a ligand induces receptor dimerization and tyrosine autophosphorylation and leads to cell proliferation. Mutations in this gene are associated with lung cancer. [provided by RefSeq, Jun 2016]

## Immunogen information

### Gene ID:

1956

### Uniprot

P00533

### Synonyms:

EGFR; ERBB; ERBB1; HER1; NISBD2; PIG61; mENA; epidermal growth factor receptor

### Immunogen:

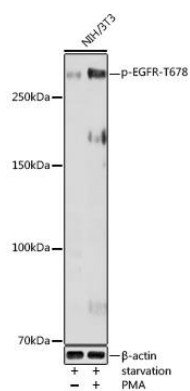
A phospho specific peptide corresponding to residues surrounding T678 of human EGFR.

### Storage:

Store at -20°C. Avoid freeze / thaw cycles. Buffer: PBS with 0.02% sodium azide, 50% glycerol, pH7.3.

## Product Images

---



Western blot - Phospho-EGFR-T678 Rabbit pAb (CABP1114)