

# Phospho-TSC2-S1387 Rabbit Polyclonal Antibody



CABP1117

---

## Product Information

### Size:

20uL, 50uL, 100uL, 200uL

### Observed MW:

200kDa

### Calculated MW:

25kDa/187-200kDa

### Applications:

WB

### Reactivity:

Human, Mouse, Rat

## Protein Background

Mutations in this gene lead to tuberous sclerosis complex. Its gene product is believed to be a tumor suppressor and is able to stimulate specific GTPases. The protein associates with hamartin in a cytosolic complex, possibly acting as a chaperone for hamartin. Alternative splicing results in multiple transcript variants encoding different isoforms. [provided by RefSeq, Jul 2008]

## Immunogen information

### Gene ID:

7249

### Uniprot

P49815

### Synonyms:

TSC2; LAM; PPP1R160; TSC4; tuberin

## Antibody Information

### Recommended dilutions:

WB 1:500 - 1:2000

### Source:

Rabbit

### Isotype:

IgG

### Purification:

Affinity purification

### Immunogen:

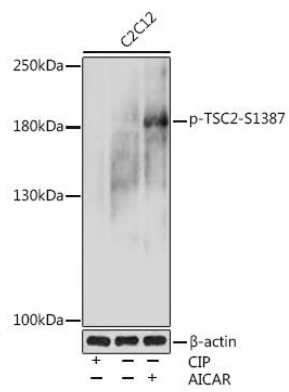
A phospho specific peptide corresponding to residues surrounding S1387 of human Tuberin/TSC2.

### Storage:

Store at -20°C. Avoid freeze / thaw cycles. Buffer: PBS with 0.02% sodium azide, 50% glycerol, pH7.3.

## Product Images

---



Western blot - Phospho-TSC2-S1387 Rabbit pAb (CABP1117)