

# Phospho-Erk1/2-T202/Y204 Rabbit Polyclonal Antibody

## CABP1120



### Product Information

**Size:**

20uL, 50uL, 100uL, 200uL

**Observed MW:**

Refer to figures

**Calculated MW:****Applications:**

WB

**Reactivity:**

Human

### Antibody Information

**Recommended dilutions:**

WB 1:500 - 1:2000

**Source:**

Rabbit

**Isotype:**

IgG

**Purification:**

Affinity purification

### Protein Background

This gene encodes a member of the MAP kinase family. MAP kinases, also known as extracellular signal-regulated kinases (ERKs), act as an integration point for multiple biochemical signals, and are involved in a wide variety of cellular processes such as proliferation, differentiation, transcription regulation and development. The activation of this kinase requires its phosphorylation by upstream kinases. Upon activation, this kinase translocates to the nucleus of the stimulated cells, where it phosphorylates nuclear targets. One study also suggests that this protein acts as a transcriptional repressor independent of its kinase activity. The encoded protein has been identified as a moonlighting protein based on its ability to perform mechanistically distinct functions. Two alternatively spliced transcript variants encoding the same protein, but differing in the UTRs, have been reported for this gene. [provided by RefSeq, Jan 2014]

### Immunogen information

**Gene ID:**

5594/ 5595

**Uniprot**

P28482/P2736

**Synonyms:****Immunogen:**

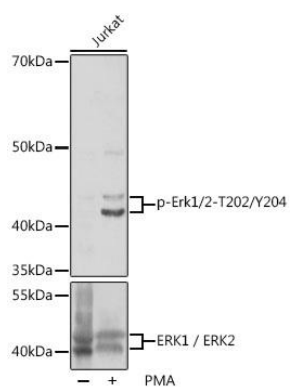
A phospho specific peptide corresponding to residues surrounding T202/Y204 of human Erk1/2.

**Storage:**

Store at -20°C. Avoid freeze / thaw cycles. Buffer: PBS with 0.02% sodium azide, 50% glycerol, pH7.3.

## Product Images

---



Western blot - Phospho-Erk1/2-T202/Y204 Rabbit pAb (CABP1120)