

Phospho-EZR-T567/RDX-T564/MSN-T558 Rabbit Polyclonal Antibody

CABP1121



Product Information

Size:

20uL, 50uL, 100uL, 200uL

Observed MW:

80kDa

Calculated MW:**Applications:**

WB

Reactivity:

Rat

Antibody Information

Recommended dilutions:

WB 1:500 - 1:2000

Source:

Rabbit

Isotype:

IgG

Purification:

Affinity purification

Protein Background

The cytoplasmic peripheral membrane protein encoded by this gene functions as a protein-tyrosine kinase substrate in microvilli. As a member of the ERM protein family, this protein serves as an intermediate between the plasma membrane and the actin cytoskeleton. This protein plays a key role in cell surface structure adhesion, migration and organization, and it has been implicated in various human cancers. A pseudogene located on chromosome 3 has been identified for this gene. Alternatively spliced variants have also been described for this gene. [provided by RefSeq, Jul 2008]

Immunogen information

Gene ID:

7430/4478/5962

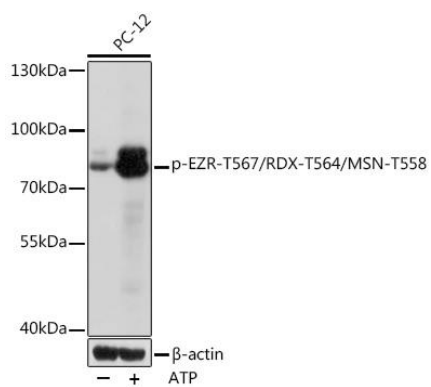
Uniprot**Synonyms:****Immunogen:**

A phospho specific peptide corresponding to residues surrounding T567/T564/T558 of human EZR/RDX/MSN.

Storage:

Store at -20°C. Avoid freeze / thaw cycles. Buffer: PBS with 0.02% sodium azide, 50% glycerol, pH7.3.

Product Images



Western blot - Phospho-EZR-T567/RDX-T564/MSN-T558
Rabbit pAb (CABP1121)