

# Phospho-GYS1-S641 Rabbit Monoclonal Antibody

## CABP1129



---

### Product Information

**Size:**

50uL, 100uL

**Observed MW:**

85KDa

**Calculated MW:**

85kDa

**Applications:**

WB

**Reactivity:**

Human, Mouse

### Protein Background

The protein encoded by this gene catalyzes the addition of glucose monomers to the growing glycogen molecule through the formation of alpha-1, 4-glycoside linkages. Mutations in this gene are associated with muscle glycogen storage disease. Alternatively spliced transcript variants encoding different isoforms have been found for this gene.[provided by RefSeq, Sep 2009]

### Immunogen information

**Gene ID:**

2997

**Uniprot**

P13807

**Synonyms:**

GSY; GYS

### Antibody Information

**Recommended dilutions:**

WB 1:500 - 1:2000

**Source:**

Rabbit

**Isotype:**

IgG

**Purification:**

Affinity purification

**Immunogen:**

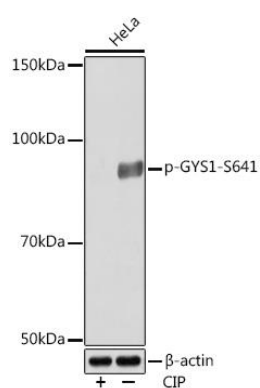
A phospho specific peptide corresponding to residues surrounding S641 of human GYS1

**Storage:**

Store at -20°C. Avoid freeze / thaw cycles. Buffer: PBS with 0.02% sodium azide, 0.05% BSA, 50% glycerol, pH7.3.

## Product Images

---



Western blot - Phospho-GYS1-S641 Rabbit mAb (CABP1129)