

Phospho-EIF2AK2-T446 Rabbit Monoclonal Antibody

CABP1134



Product Information

Size:

20uL, 50uL, 100uL, 200uL

Observed MW:

74KDa

Calculated MW:

62kDa

Applications:

WB

Reactivity:

Human

Protein Background

The protein encoded by this gene is a serine/threonine protein kinase that is activated by autophosphorylation after binding to dsRNA. The activated form of the encoded protein can phosphorylate translation initiation factor EIF2S1, which in turn inhibits protein synthesis. This protein is also activated by manganese ions and heparin. Three transcript variants encoding two different isoforms have been found for this gene. [provided by RefSeq, Oct 2011]

Immunogen information

Gene ID:

5610

Uniprot

P19525

Synonyms:

EIF2AK1; PKR; PPP1R83; PRKR

Antibody Information

Recommended dilutions:

WB 1:500 - 1:2000

Source:

Rabbit

Isotype:

IgG

Purification:

Affinity purification

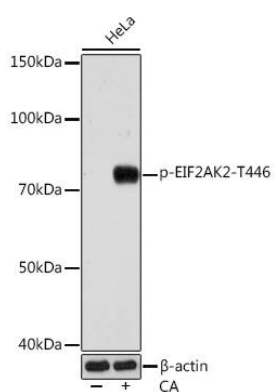
Immunogen:

A phospho specific peptide corresponding to residues surrounding T446 of human EIF2AK2

Storage:

Store at -20°C. Avoid freeze / thaw cycles. Buffer: PBS with 0.02% sodium azide, 0.05% BSA, 50% glycerol, pH7.3.

Product Images



Western blot - Phospho-EIF2AK2-T446 Rabbit mAb (CABP1134)