

# Phospho-CDC37-S13 Rabbit Monoclonal Antibody

## CABP1141



### Product Information

**Size:**

20uL, 50uL, 100uL

**Observed MW:**

50KDa

**Calculated MW:**

50kDa

**Applications:**

WB

**Reactivity:**

Human, Mouse, Rat

### Protein Background

The protein encoded by this gene is highly similar to Cdc 37, a cell division cycle control protein of *Saccharomyces cerevisiae*. This protein is a molecular chaperone with specific function in cell signal transduction. It has been shown to form complex with Hsp90 and a variety of protein kinases including CDK4, CDK6, SRC, RAF-1, MOK, as well as eIF2 alpha kinases. It is thought to play a critical role in directing Hsp90 to its target kinases. [provided by RefSeq, Jul 2008]

### Immunogen information

**Gene ID:**

11140

**Uniprot**

Q16543

**Synonyms:**

P50CDC37

### Antibody Information

**Recommended dilutions:**

WB 1:500 - 1:2000

**Source:**

Rabbit

**Isotype:**

IgG

**Purification:**

Affinity purification

**Immunogen:**

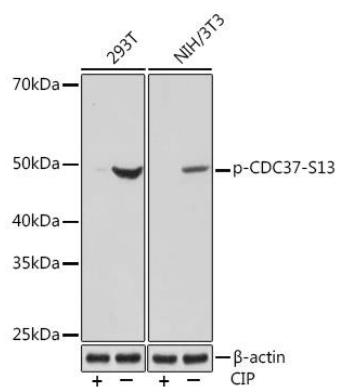
A phospho specific peptide corresponding to residues surrounding S13 of human CDC37

**Storage:**

Store at -20°C. Avoid freeze / thaw cycles. Buffer: PBS with 0.02% sodium azide, 0.05% BSA, 50% glycerol, pH7.3.

## Product Images

---



Western blot - Phospho-CDC37-S13 Rabbit mAb (CABP1141)