

Phospho-JunD-S255 Rabbit Monoclonal Antibody

CABP1142



Product Information

Size:

20uL, 50uL, 100uL

Observed MW:

38KDa/42KDa

Calculated MW:

38, 42kDa

Applications:

WB

Reactivity:

Human, Mouse

Protein Background

The protein encoded by this intronless gene is a member of the JUN family, and a functional component of the AP1 transcription factor complex. This protein has been proposed to protect cells from p53-dependent senescence and apoptosis. Alternative translation initiation site usage results in the production of different isoforms (PMID:12105216). [provided by RefSeq, Nov 2013]

Immunogen information

Gene ID:

3727

Uniprot

P17535

Synonyms:

AP-1

Antibody Information

Recommended dilutions:

WB 1:500 - 1:2000

Source:

Rabbit

Isotype:

IgG

Purification:

Affinity purification

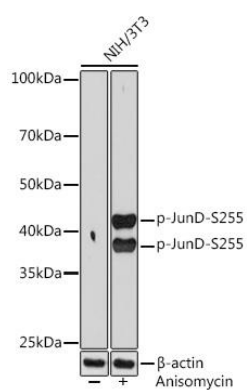
Immunogen:

A phospho specific peptide corresponding to residues surrounding S255 of human JunD

Storage:

Store at -20°C. Avoid freeze / thaw cycles. Buffer: PBS with 0.02% sodium azide, 0.05% BSA, 50% glycerol, pH7.3.

Product Images



Western blot - Phospho-JunD-S255 Rabbit mAb (CABP1142)