

Phospho-IRE1-S724 Rabbit Monoclonal Antibody



CABP1146

Product Information

Size:

20uL, 50uL, 100uL

Observed MW:

130KDa

Calculated MW:

110kDa

Applications:

WB

Reactivity:

Human, Mouse

Protein Background

The protein encoded by this gene is the ER to nucleus signalling 1 protein, a human homologue of the yeast Ire1 gene product. This protein possesses intrinsic kinase activity and an endoribonuclease activity and it is important in altering gene expression as a response to endoplasmic reticulum-based stress signals. [provided by RefSeq, Jul 2008]

Immunogen information

Gene ID:

2081

Uniprot

O75460

Synonyms:

IRE1; IRE1P; IRE1a; hIRE1p

Antibody Information

Recommended dilutions:

WB 1:500 - 1:2000

Source:

Rabbit

Isotype:

IgG

Purification:

Affinity purification

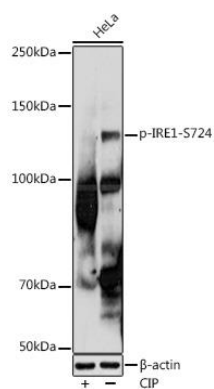
Immunogen:

A phospho specific peptide corresponding to residues surrounding S724 of human IRE1

Storage:

Store at -20°C. Avoid freeze / thaw cycles. Buffer: PBS with 0.02% sodium azide, 0.05% BSA, 50% glycerol, pH7.3.

Product Images



Western blot - Phospho-IRE1-S724 Rabbit mAb (CABP1146)