

# Phospho-RSK1-S380 Rabbit Monoclonal Antibody

## CABP1147



### Product Information

**Size:**

20uL, 50uL, 100uL

**Observed MW:**

90KDa

**Calculated MW:**

90kDa

**Applications:**

WB

**Reactivity:**

Human, Rat

### Protein Background

This gene encodes a member of the RSK (ribosomal S6 kinase) family of serine/threonine kinases. This kinase contains 2 nonidentical kinase catalytic domains and phosphorylates various substrates, including members of the mitogen-activated kinase (MAPK) signalling pathway. The activity of this protein has been implicated in controlling cell growth and differentiation. Alternate transcriptional splice variants, encoding different isoforms, have been characterized. [provided by RefSeq, Jul 2008]

### Immunogen information

**Gene ID:**

6195

**Uniprot**

Q15418

**Synonyms:**

HU-1; MAPKAPK1A; RSK; RSK1; p90Rsk

### Antibody Information

**Recommended dilutions:**

WB 1:500 - 1:2000

**Source:**

Rabbit

**Isotype:**

IgG

**Purification:**

Affinity purification

**Immunogen:**

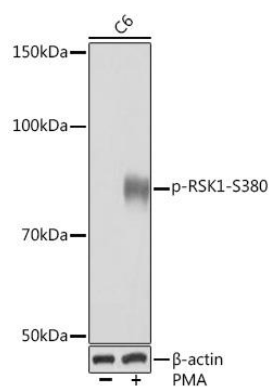
A phospho specific peptide corresponding to residues surrounding S380 of human RSK1

**Storage:**

Store at -20°C. Avoid freeze / thaw cycles. Buffer: PBS with 0.02% sodium azide, 0.05% BSA, 50% glycerol, pH7.3.

## Product Images

---



Western blot - Phospho-RSK1-S380 Rabbit mAb (CABP1147)