

Pan Phospho-Tyrosine Rabbit Monoclonal Antibody

CABP1162



Product Information

Size:

20uL, 50uL, 100uL

Observed MW:

Refer to figures

Calculated MW:**Applications:**

WB

Reactivity:

Human, Mouse, Rat, Other
(Wide Range)

Antibody Information

Recommended dilutions:

WB 1:500 - 1:2000

Source:

Rabbit

Isotype:

IgG

Purification:

Affinity purification

Protein Background

Immunogen information

Gene ID:**Uniprot**

无

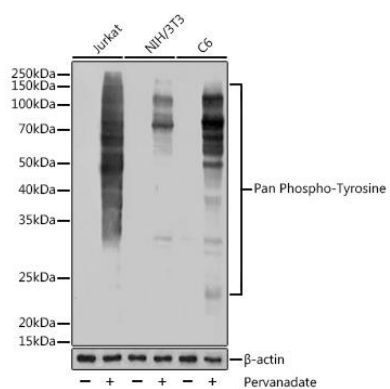
Synonyms:**Immunogen:**

A synthetic peptide corresponding to a sequence containing phosphorylated Y.

Storage:

Store at -20°C. Avoid freeze / thaw cycles. Buffer: PBS with 0.02% sodium azide, 0.05% BSA, 50% glycerol, pH7.3.

Product Images



Western blot - Pan Phospho-Tyrosine Rabbit mAb (CABP1162)