

Phospho-CDC25A-S76 Rabbit Polyclonal Antibody

CABP1166



Product Information

Size:

50uL, 100uL, 200uL

Observed MW:

59kDa

Calculated MW:

54kDa/59kDa

Applications:

WB

Reactivity:

Human, Mouse, Rat

Protein Background

CDC25A is a member of the CDC25 family of phosphatases. CDC25A is required for progression from G1 to the S phase of the cell cycle. It activates the cyclin-dependent kinase CDC2 by removing two phosphate groups. CDC25A is specifically degraded in response to DNA damage, which prevents cells with chromosomal abnormalities from progressing through cell division. CDC25A is an oncogene, although its exact role in oncogenesis has not been demonstrated. Two transcript variants encoding different isoforms have been found for this gene.

Immunogen information

Gene ID:

993

Uniprot

P30304

Synonyms:

CDC25A; CDC25A2

Antibody Information

Recommended dilutions:

WB 1:500 - 1:2000

Source:

Rabbit

Isotype:

IgG

Purification:

Affinity purification

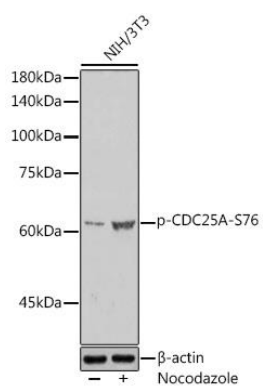
Immunogen:

A phospho specific peptide corresponding to residues surrounding S76 of human CDC25A

Storage:

Store at -20°C. Avoid freeze / thaw cycles. Buffer: PBS with 0.02% sodium azide, 50% glycerol, pH7.3.

Product Images



Western blot - Phospho-CDC25A-S76 Rabbit pAb (CABP1166)