

SLC7A11 Rabbit Polyclonal Antibody



CAB13685

Product Information

Product SKU:

CAB13685

Observed MW:

35kDa

Calculated MW:

55kDa

Category:

Primary antibody

Applications:

WB

Reactivity:

Human, Mouse, Rat

Protein Background

This gene encodes a member of a heteromeric, sodium-independent, anionic amino acid transport system that is highly specific for cysteine and glutamate. In this system, designated Xc(-), the anionic form of cysteine is transported in exchange for glutamate. This protein has been identified as the predominant mediator of Kaposi sarcoma associated herpesvirus fusion and entry permissiveness into cells. Also, increased expression of this gene in primary gliomas (compared to normal brain tissue) was associated with increased glutamate secretion via the XCT channels, resulting in neuronal cell death.

Antibody Information

Recommended dilutions:

WB 1:500 - 1:2000

Source:

Rabbit

Isotype:

IgG

Purification:

Affinity purification

Immunogen information

Gene ID:

23657

Uniprot

Q9UPY5

Synonyms:

SLC7A11;CCBR1;xCT

Immunogen:

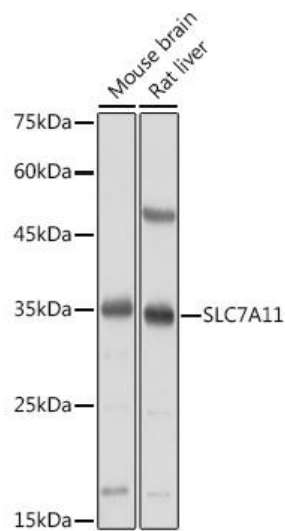
A synthetic peptide corresponding to a sequence within amino acids 150-250 of human SLC7A11 (NP_055146.1).

Storage:

Store at -20°C. Avoid freeze / thaw cycles.

Buffer: PBS with 0.02% sodium azide, 50% glycerol, pH 7.3.

Product Images



Western blot analysis of extracts of various cell lines, using SLC7A11 antibody (CAB13685) at 1:1000

dilution.

Secondary antibody: HRP Goat Anti-Rabbit IgG (H+L) (CABS014) at 1:10000 dilution.

Lysates/proteins: 25ug per lane.

Blocking buffer: 3% non-fat dry milk in TBST.

Detection: ECL Basic Kit (AbGn00020).

Exposure time: 60s