

KRT6A Monoclonal Antibody

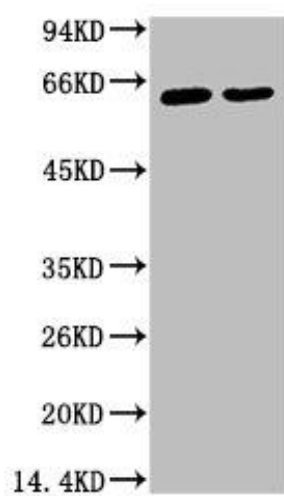


MACO0054

Product Information

Size: 50ug	Protein Background:
Reactivity: Human	Gene ID: KRT6A
Source: Mouse	Uniprot P02538/P04259/P48668
Isotype: IgG	Synonyms: Keratin type II cytoskeletal 6A/B/C
Applications: ELISA, WB	Immunogen: Synthetic Peptide
Recommended dilutions: WB:1:500-1:5000	Storage: PBS, pH 7.4, containing 0.02% sodium azide as Preservative and 50% Glycerol.

Product Images



Western blot analysis of 1) HeLa, 2) HepG2, diluted at 1:2000.