

Pan Methylated Lysine Monoclonal Antibody



MACO0139

Product Information

Size:

50ug

Reactivity:

Source:

Mouse

Isotype:

IgG

Applications:

ELISA, WB, IHC

Recommended dilutions:

WB:1:500-1:5000, IHC:1:50-1:500

Protein Background:

Gene ID:

Pan Methylated Lysine

Uniprot

Synonyms:

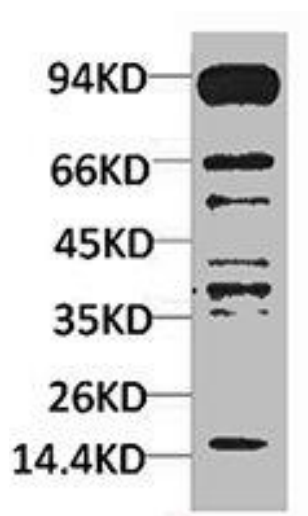
Immunogen:

Conjugated Protein

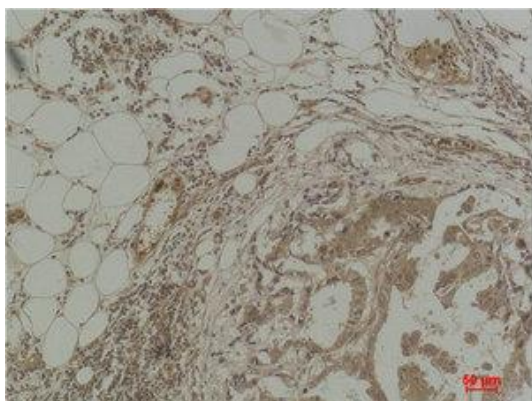
Storage:

PBS, pH 7.4, containing 0.02% sodium azide as Preservative and 50% Glycerol.

Product Images



Western blot analysis of HeLa using Pan Methylated Lysine Monoclonal Antibody.



Immunohistochemical analysis of paraffin-embedded Human Breast Carcinoma using Pan Methylated Lysine Monoclonal Antibody.