

# MICU1 Monoclonal Antibody



MACO0140

---

## Product Information

**Size:**

50ug

**Reactivity:**

Human, Mouse, Rat

**Source:**

Mouse

**Isotype:**

IgG

**Applications:**

ELISA, WB, IHC

**Recommended dilutions:**

WB:1:500-1:5000, IHC:1:50-1:500

**Protein Background:**

**Gene ID:**

MICU1

**Uniprot**

Q9BPX6

**Synonyms:**

Calcium uptake protein 1, mitochondrial

**Immunogen:**

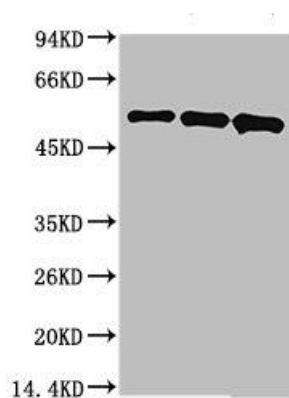
Recombinant Protein

**Storage:**

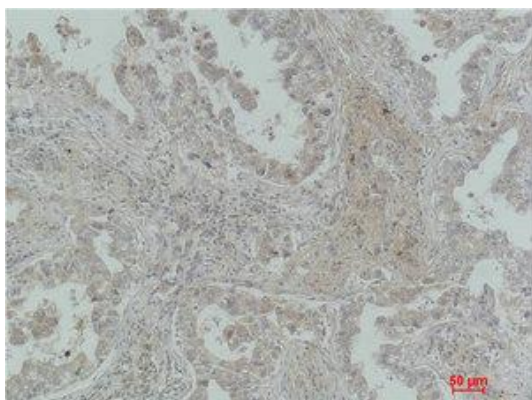
PBS, pH 7.4, containing 0.02% sodium azide as Preservative and 50% Glycerol.

## Product Images

---



Western blot analysis of 1) MCF7, 2) Mouse Brain Tissue, 3) Rat Brain Tissue using MICU1 Monoclonal Antibody.



Immunohistochemical analysis of paraffin-embedded Human Lung Carcinoma using MICU1 Monoclonal Antibody.