

Phosphoserine Monoclonal Antibody



MACO0142

Product Information

Size:

50ug

Reactivity:

Source:

Mouse

Isotype:

IgG

Applications:

ELISA, WB, IHC

Recommended dilutions:

WB:1:500-1:2000, IHC:1:100-1:300

Protein Background:

Gene ID:

Phosphoserine

Uniprot

Synonyms:

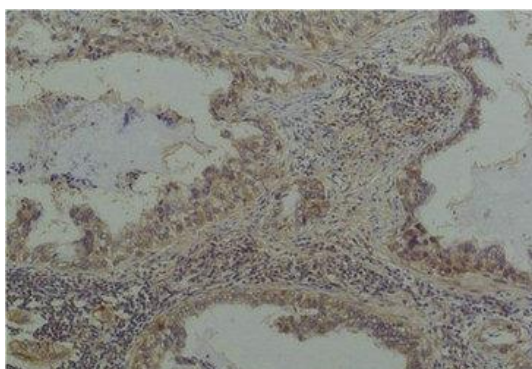
Immunogen:

Purified Protein

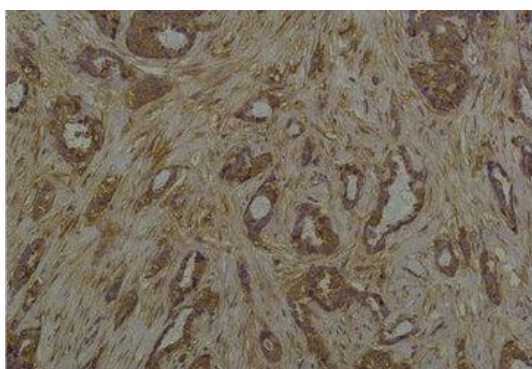
Storage:

PBS, pH 7.4, containing 0.02% sodium azide as Preservative and 50% Glycerol.

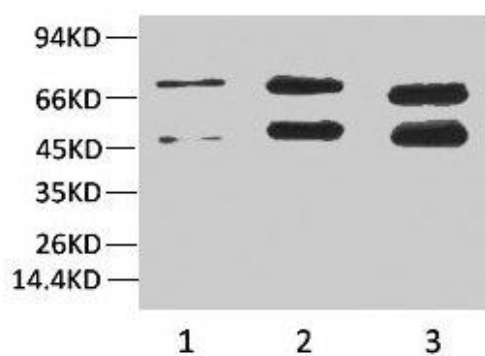
Product Images



Immunohistochemical analysis of paraffin-embedded Human Lung Carcinoma using Phosphoserine Mouse mAb diluted at 1:200.



Immunohistochemical analysis of paraffin-embedded Human Breast Carcinoma using Phosphoserine Mouse mAb diluted at 1:200.



Western blot analysis of 1) HeLa, 2) Rat Brain Tissue, 3) Mouse Brain Tissue with Phosphoserine Mouse mAb diluted at 1:2000.