

# Luciferase Monoclonal Antibody



MAC00405

---

## Product Information

**Size:**

50ug

**Reactivity:**

Firefly

**Source:**

Mouse

**Isotype:**

IgG

**Applications:**

ELISA, WB

**Recommended dilutions:**

WB:1:500-1:5000

**Protein Background:**

**Gene ID:**

Luciferase

**Uniprot**

P08659

**Synonyms:**

**Immunogen:**

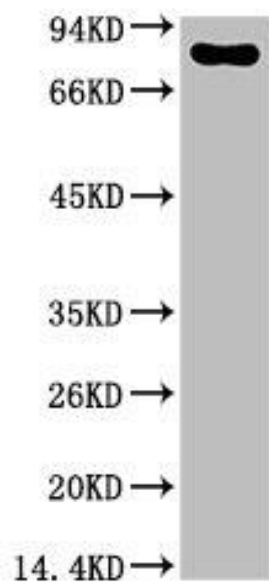
Synthetic Peptide of Luciferase

**Storage:**

Liquid in PBS containing 50% glycerol, 0.5% BSA and 0.02% sodium azide.

## Product Images

---



Western blot analysis of Firefly Luciferase Transfected Hela Cell Lysate using Luciferase Mouse mAb diluted at 1:2000.