

Phospho-SMAD3(S425) Monoclonal Antibody



MAC00427

Product Information

Size:

50ug

Reactivity:

Human, Mouse, Rat

Source:

Mouse

Isotype:

IgG

Applications:

ELISA, IHC

Recommended dilutions:

IHC:1:50-1:200

Protein Background:**Gene ID:**

Phospho-SMAD3(S425)

Uniprot

P84022

Synonyms:

Mothers against decapentaplegic homolog 3 (MAD homolog 3) (Mad3) (Mothers against DPP homolog 3) (hMAD-3) (JV15 2) (SMAD family member 3) (SMAD 3) (Smad3) (hSMAD3)

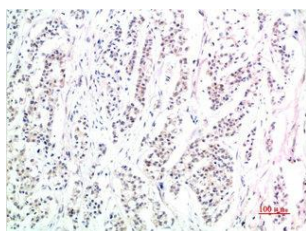
Immunogen:

Synthetic Peptide

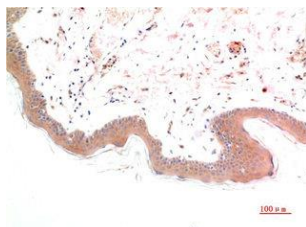
Storage:

PBS, pH 7.4, containing 0.02% sodium azide as Preservative and 50% Glycerol.

Product Images



Immunohistochemical analysis of paraffin-embedded Human Stomach Carcinoma Tissue using Phospho-Smad3(S425) Mouse mAb diluted at 1:200.



Immunohistochemical analysis of paraffin-embedded Human Skin Tissue using Phospho-Smad3(S425) Mouse mAb diluted at 1:200.