

ACTB/POTEKP/ACTG1 Monoclonal Antibody



MAC00470

Product Information

Size:

50ul

Reactivity:

Human

Source:

Mouse

Isotype:

IgG2b, Kappa

Applications:

ELISA, IHC

Recommended dilutions:

IHC:1:20-1:200

Protein Background:

Actins are highly conserved proteins that are involved in various types of cell motility and are ubiquitously expressed in all eukaryotic cells.

Gene ID:

ACTB/POTEKP/ACTG1

Uniprot

P60709/Q9BYX7/P63261

Synonyms:

Actin, cytoplasmic 1 (Beta-actin) [Cleaved into: Actin, cytoplasmic 1, N-terminally processed], ACTB

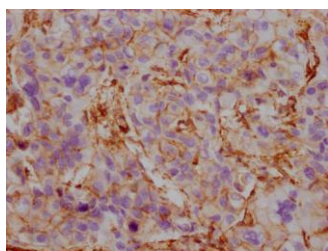
Immunogen:

Synthesized peptide derived from human Actin pan

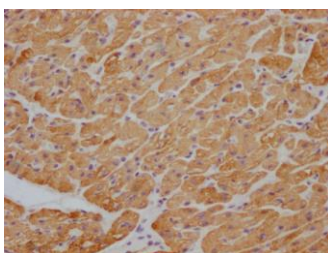
Storage:

Liquid in PBS containing 50% glycerol, 0.5% BSA and 0.02% sodium azide.

Product Images



IHC image of MACO0470 diluted at 1:100 and staining in paraffin-embedded human liver cancer performed on a Leica Bond™ system. After dewaxing and hydration, antigen retrieval was mediated by high pressure in a citrate buffer (pH 6.0). Section was blocked with 10% normal goat serum 30min at RT. Then primary antibody (1% BSA) was incubated at 4°C overnight. The primary is detected by a Goat anti-mouse IgG polymer labeled by HRP and visualized using 0.05% DAB.



IHC image of MACO0470 diluted at 1:100 and staining in paraffin-embedded human heart tissue performed on a Leica Bond™ system. After dewaxing and hydration, antigen retrieval was mediated by high pressure in a citrate buffer (pH 6.0). Section was blocked with 10% normal goat serum 30min at RT. Then primary antibody (1% BSA) was incubated at 4°C overnight. The primary is detected by a Goat anti-mouse IgG polymer labeled by HRP and visualized using 0.05% DAB.