

ACTC1/ACTA1/ACTG2 Monoclonal Antibody



MAC00471

Product Information

Size:

50ul

Reactivity:

Human

Source:

Mouse

Isotype:

IgG

Applications:

ELISA, IHC

Recommended dilutions:

IHC:1:20-1:200

Protein Background:**Gene ID:**

ACTC1/ACTA1/ACTG2

Uniprot

P68032/P68133/P63267

Synonyms:

ACTC1; ACTC; Actin, alpha cardiac muscle 1; Alpha-cardiac actin

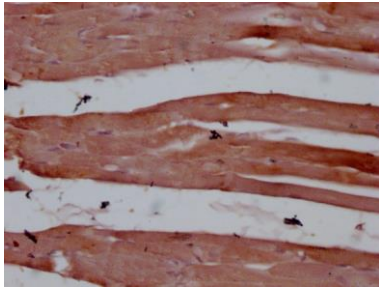
Immunogen:

Synthesized peptide derived from human Actin, Muscle Specific

Storage:

Liquid in PBS containing 50% glycerol, 0.5% BSA and 0.02% sodium azide.

Product Images



IHC image of MACO0471 diluted at 1:100 and staining in paraffin-embedded human skeletal muscle tissue performed on a Leica Bond™ system. After dewaxing and hydration, antigen retrieval was mediated by high pressure in a citrate buffer (pH 6.0). Section was blocked with 10% normal goat serum 30min at RT. Then primary antibody (1% BSA) was incubated at 4°C overnight. The primary is detected by a Goat anti-mouse IgG polymer labeled by HRP and visualized using 0.05% DAB.